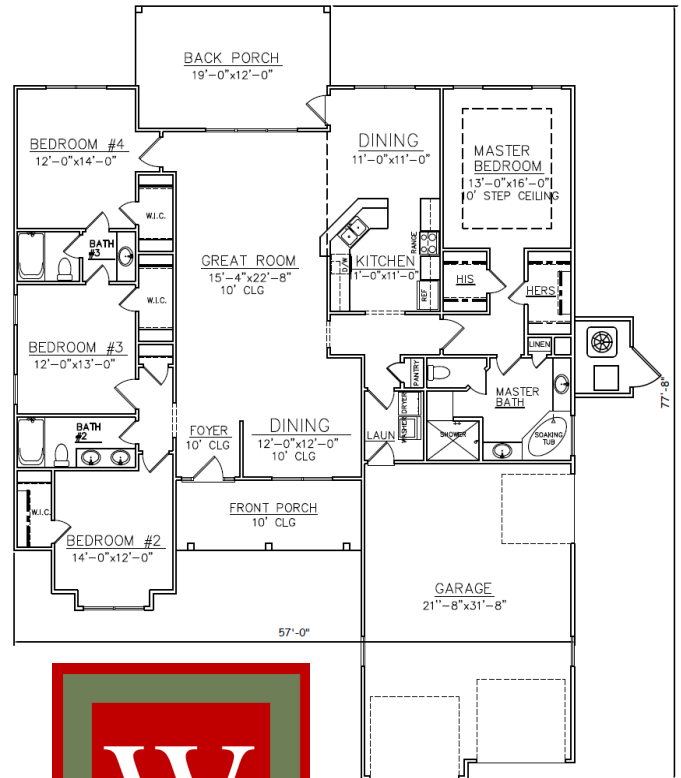


The 2326 Plan

Offered by Josselyn Homes

- Four bedroom, three bath
- 2,326 square feet, as per builder's plans
- Granite countertops
- PEX plumbing system
- 9 ft.+ ceilings
- Custom maple cabinetry
- Stainless steel appliances package
- Limestone tile shower and floors
- Maintenance-free stucco siding

Construction by Josselyn Homes Inc.



**JOSSELYN
 HOMES**

We can build in your neighborhood or ours. Ask us about our many floor plans or visit JosselynHomes.com for more information.

W.E. Josselyn III

C: 912.222.5595

Joss@JosselynHomes.com

P.O. Box 5793

St. Mary's, Georgia 31558

Owner is a licensed Realtor



Voted Camden County's Best Builder/Contractor for 2013 and 2014.