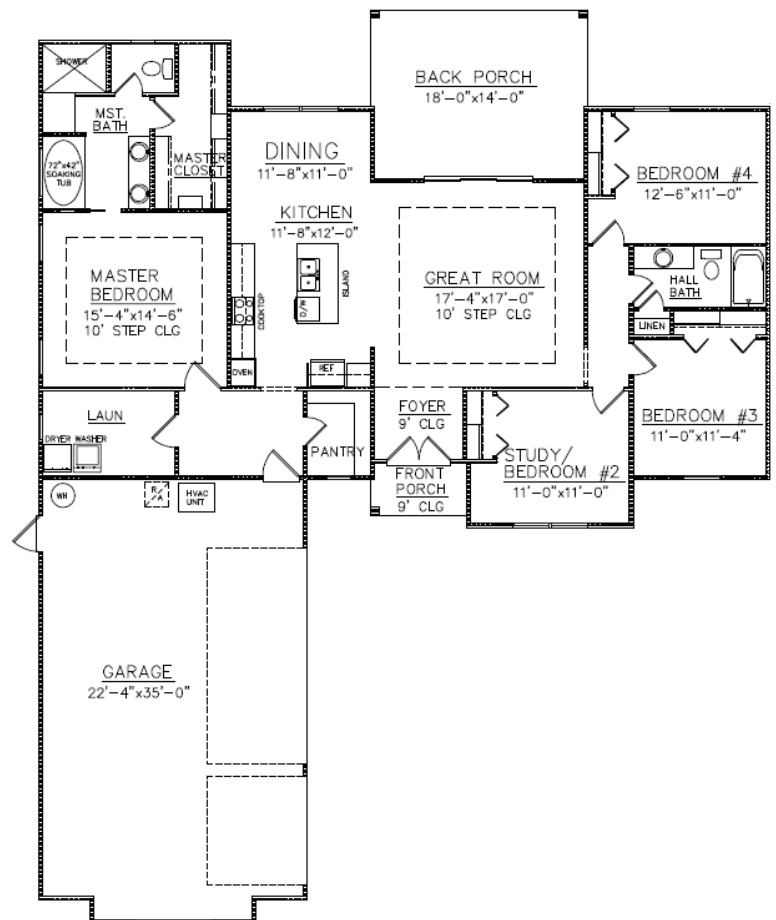




THE 1915 PLAN

Offered by Josselyn Homes

- Four bedroom, two bath
- 1,915 heated square feet, as per builder's plans
- Granite countertops
- PEX plumbing system
- 9 ft.+ ceilings
- Custom maple cabinetry
- Stainless steel appliances package
- 2-10 Home Buyers Warranty®
- Limestone tile shower and floors
- Maintenance-free stucco siding



W.E. Josselyn III
 C: 912.222.5595
 joss@josselynhomes.com
 P.O. Box 5793
 St. Marys, GA 31558
 Owner is licensed Realtor



JOSSELYN
 HOMES

We can build in your neighborhood or ours. Ask us about our many floor plans or visit JosselynHomes.com for more information.

Construction by Josselyn Homes Inc.

Voted Camden County's Best Builder / Contactor for 2013 and 2014.

