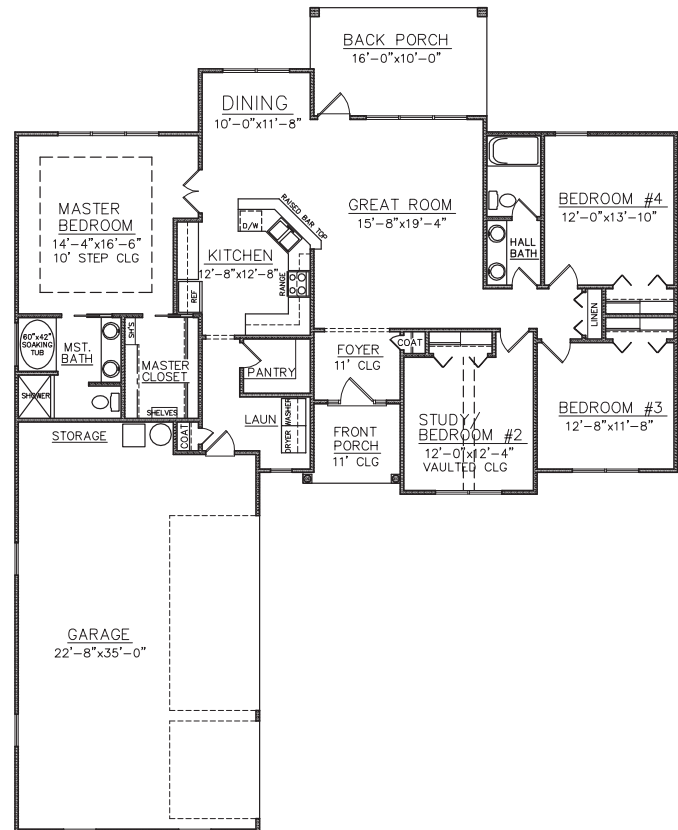




THE 1912 PLAN

Offered by Josselyn Homes

- Four bedroom, two bath
- 1,912 square feet, as per builder's plans
- Granite countertops
- PEX plumbing system
- 9 ft.+ ceilings
- Custom maple cabinetry
- Stainless steel appliances package
- 2-10 Home Buyers Warranty®
- Limestone tile shower and floors
- Maintenance-free stucco siding



W.E. Josselyn III
 C: 912.222.5595
 joss@josselynhomes.com
 P.O. Box 5793
 St. Marys, GA 31558
 Owner is licensed Realtor



JOSSelyn
 H O M E S

We can build in your neighborhood or ours. Ask us about our many floor plans or visit JosselynHomes.com for more information.

Construction by Josselyn Homes Inc.

Voted Camden county's best builder/contractor for 2013.

